

Fabric Stretch Display 20'

Fabric Stretch Display 20'

Fabric Stretch Display 20' incorporates a sleek, straight aluminum frame with a zipper pillowcase fabric graphic to create a sharp, bold backwall that clearly conveys who you are and what you do. Print on just one side or both sides of the graphic to maximize your message and brand exposure.



Need help? 

**See our instructional videos online
at www.StepandRepeatLA.com
or call (818) 434-7591**

**For very urgent emergencies after
hours or on weekends, please email
911@stepandrepeatla.com and we
will get back to you right away.**

We are continually improving and modifying our product range and reserve the right to vary the specifications without prior notice. All dimensions and weights quoted are approximate and we accept no responsibility for variance. E&OE. See Graphic Templates for graphic bleed specifications.

features and benefits:

- State-of-the-art 30mm aluminum tubing with heavy duty internal spigot connectors
- Easy to store and ship
- Quick to set up
- Kit includes: one frame, one dye-sublimated zipper pillowcase graphic, and two wheeled molded storage cases
- Lifetime hardware warranty against manufacturer defects

dimensions:

Hardware

Assembled unit:
227.94" w x 92.33" h x 25.59" d
5790mm(w) x 2346mm(h) x 650mm(d)

Approximate weight (includes graphic):
75 lbs / 34 kgs

Shipping

Shipping dimensions:
2 OCE cases:
OCE: Expandable case length (l) may vary
40" - 66" l x 18" h x 18" d
1016mm-1677mm(l) x 458mm(h) x 458mm(d)

Approximate shipping weight (with case):
129 lbs / 59 kgs

Graphic

Refer to related graphic template for more information.

Visit:
www.exhibitors-handbook.com/graphic-templates

additional information:

Graphic material:
Dye-sublimated zipper pillowcase fabric

Optional accessories:
Lumina 8-50 watt halogen lighting, literature pocket, stand-off literature rack, stand-off graphic shelf, graphic header, larger freight cases



BACKDROPS FOR RED CARPET EVENTS

Included In Your Kit

Tools,
Components,
& Connectors



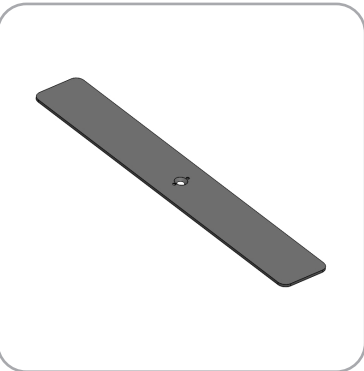
ALLEN KEY SET x1



LN114-SCRW x3

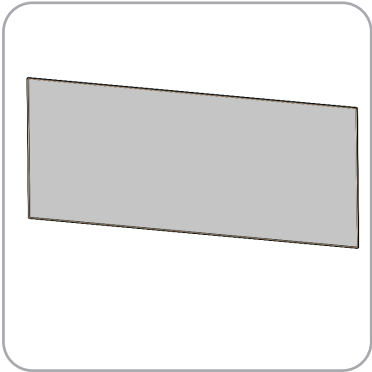


TC-30-90T x2



LN114-S2-650 x3

Graphics



FMLT-WS20-01-G x1

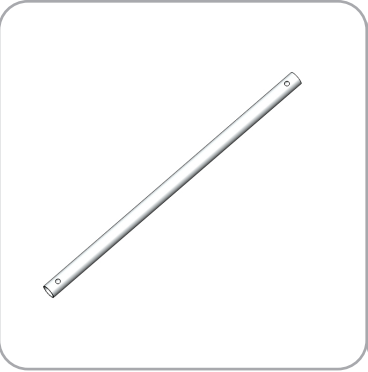
Included In Your Kit

NEEDS EDITS

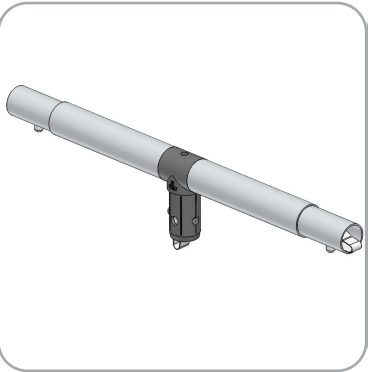
Tubes



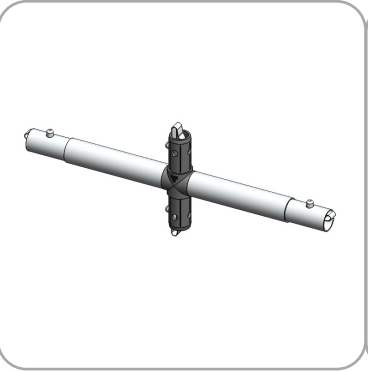
WS10-T6 x2



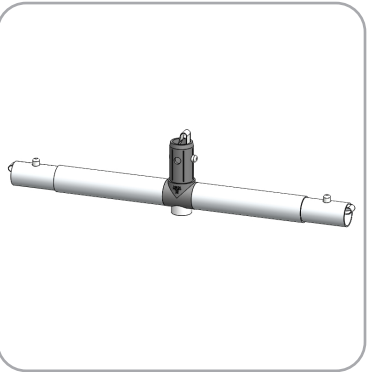
WS10-T1 x8



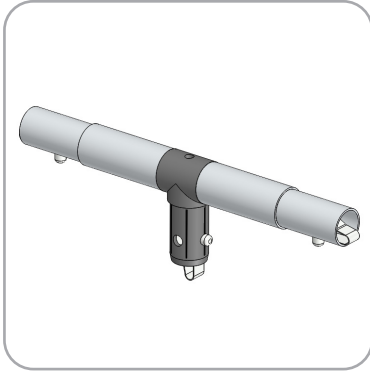
WS10-T4 x2



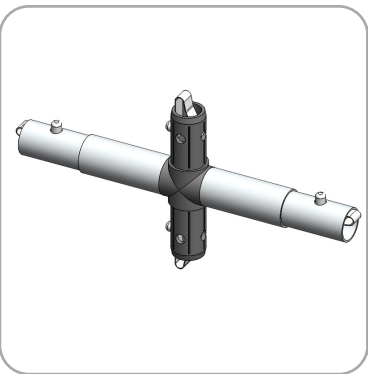
WS10-T5 x2



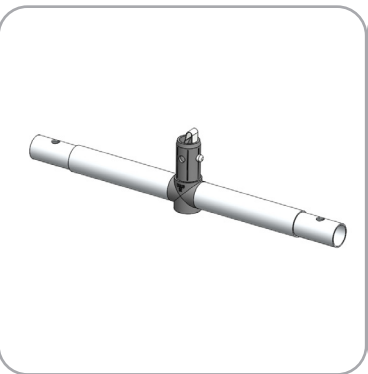
WS10-T7 x2



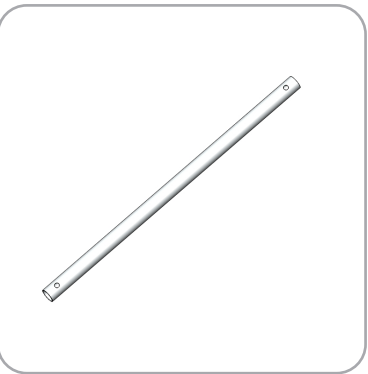
WV20-01-T1 x1



WV20-01-T2 x1

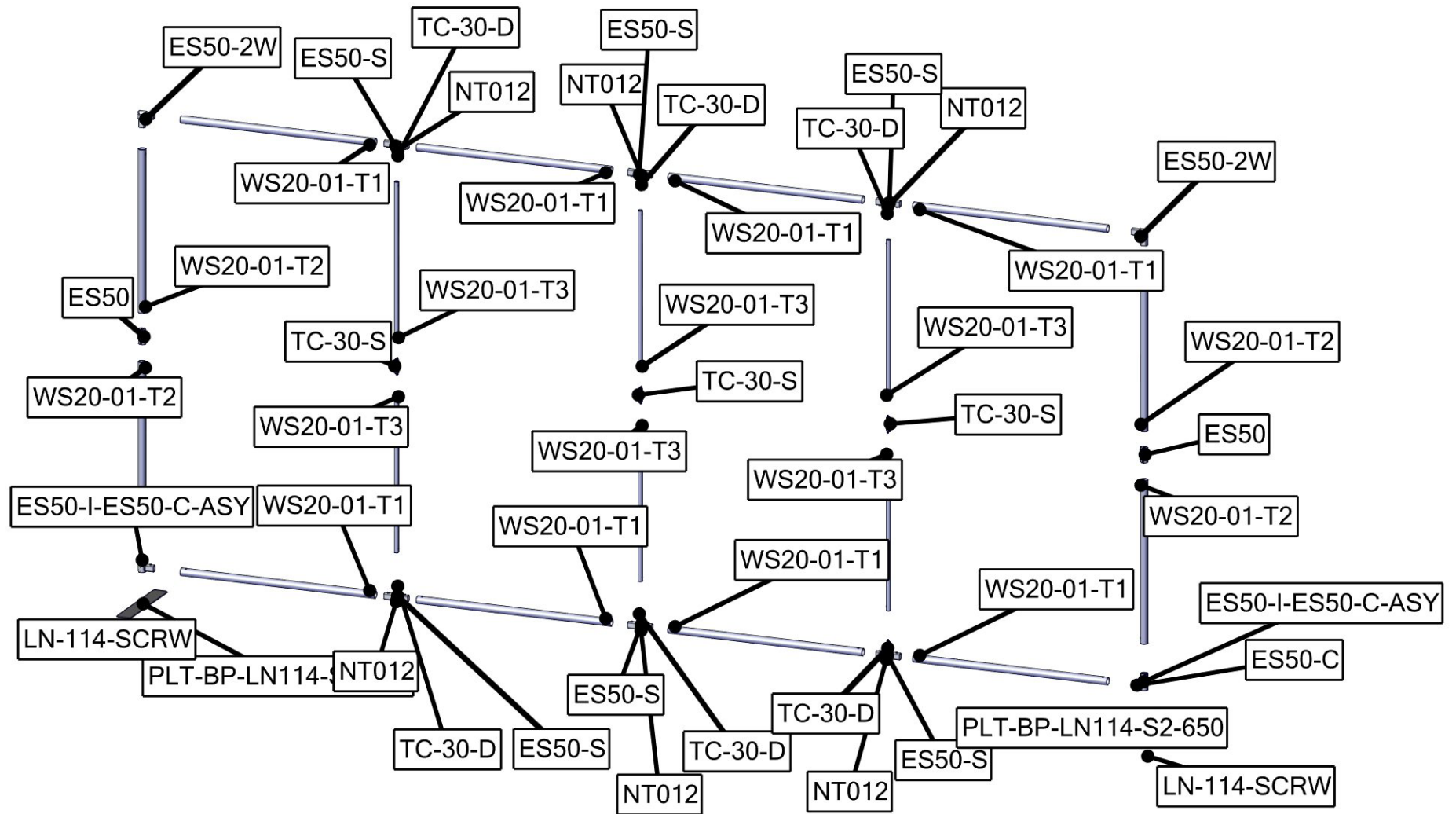


WS-01-T1 x1

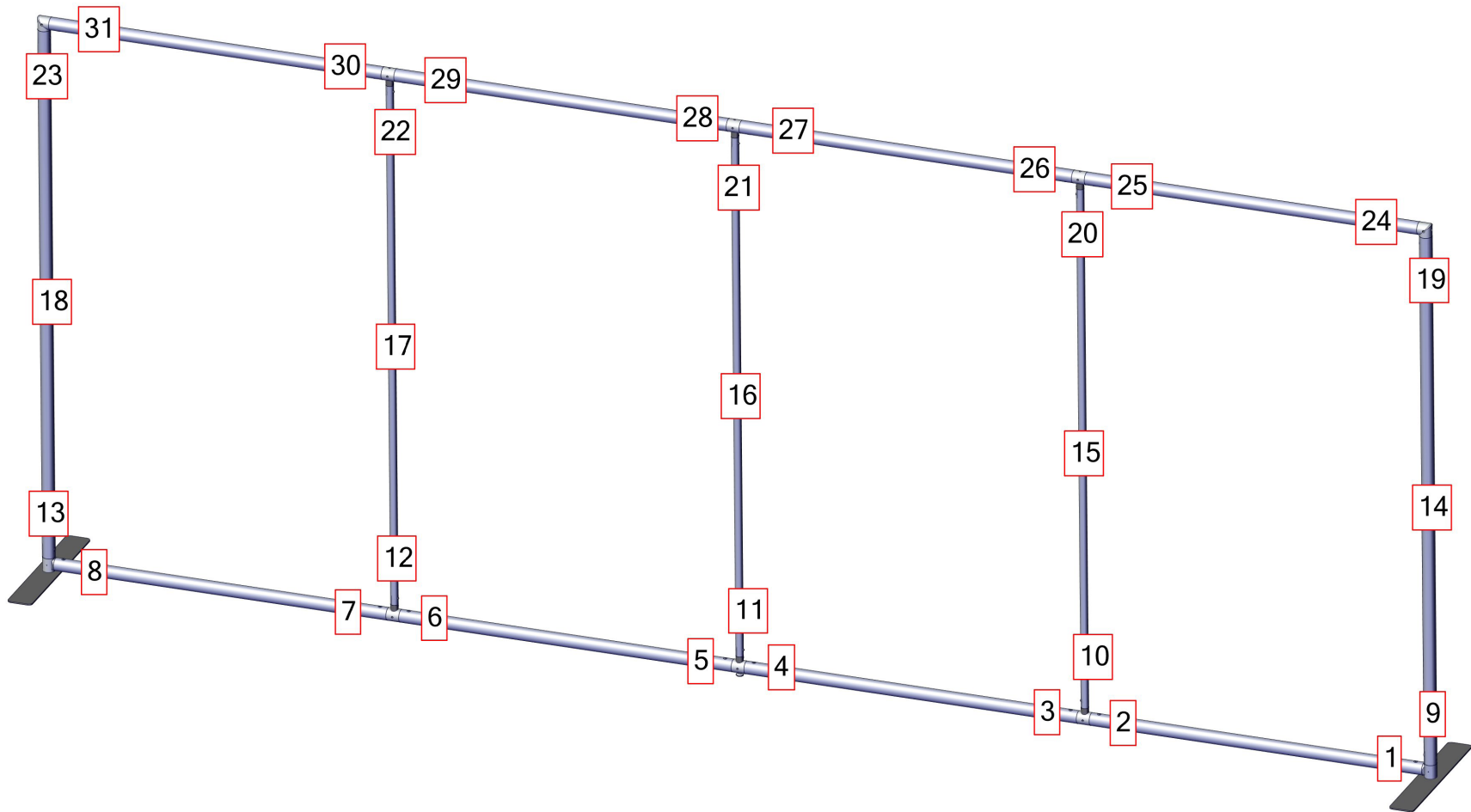


WS10-T2 x12

Exploded View



Labeling Diagram

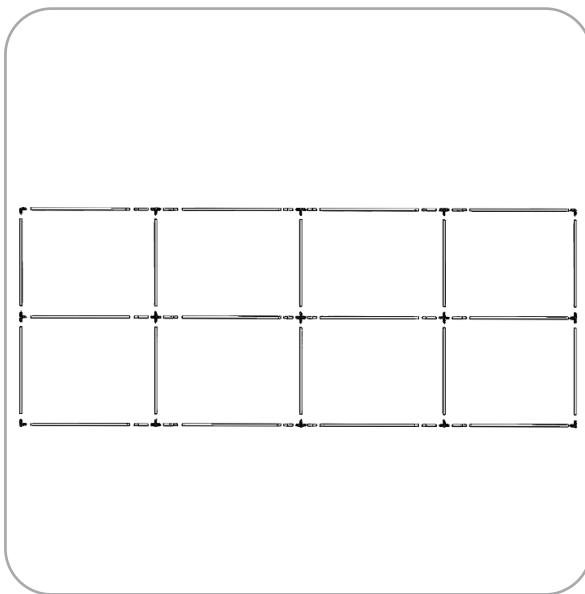
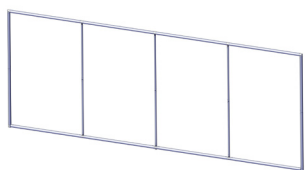


Kit Assembly

Step by Step

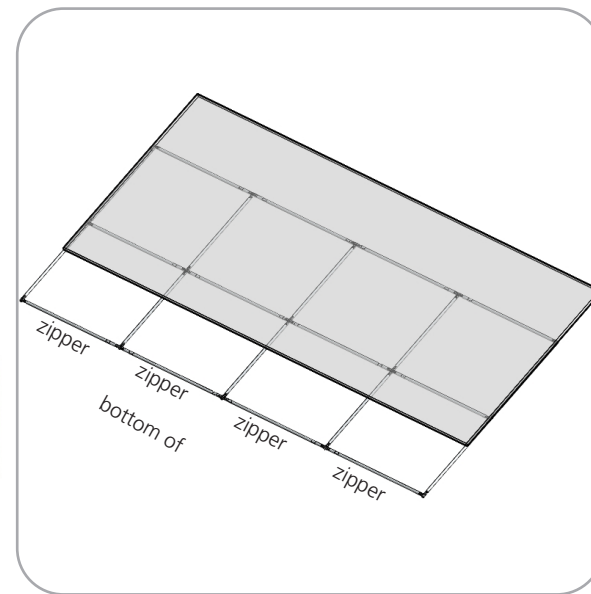
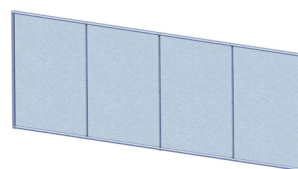
Step 1.

Gather the components necessary for assembling the frame and lay them flat on the floor. Assemble in the order the "Labeling Diagram" instructs. Lock your connectors into place using the provided allen key set.



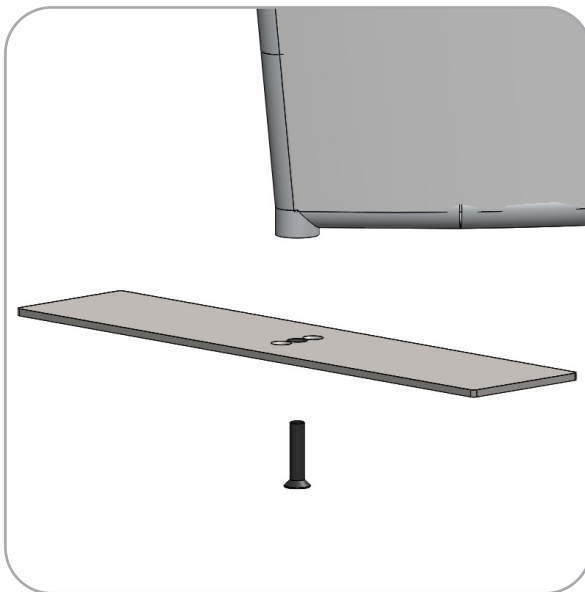
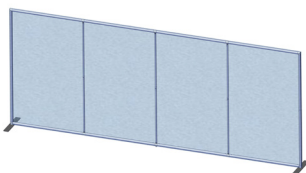
Step 2.

With the frame laying flat on the floor, locate your pillowcase A graphic. With the pillowcase unzipped, encase frame by covering the frame from top to bottom.



Step 3.

Use a LN114 screw to fasten the LN114-S2-650 to the left and right ends of the frame.



Step 4.

Use a LN114 screw to fasten the LN114-S2-650 to the center of the frame.

